



K1200rs CAM SPROCKET INSTALLATION INSTRUCTIONS

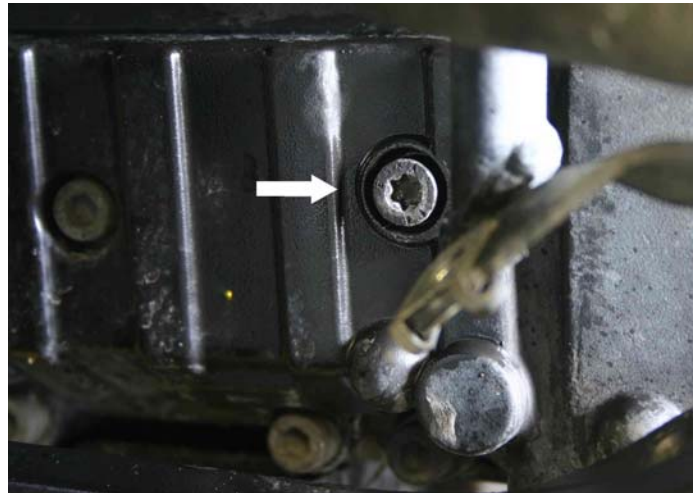
TOOLS REQUIRED:

1. T27 Torx™, tamper-proof;
2. T40 Torx™, tamper-proof;
3. 17mm 3/8" drive shallow socket;
4. 3/8" drive ratchet
5. two 19mm open end wrenches
6. torque wrench
7. 1/8"(3mm approx.) diameter, 4" length pin
8. Permatex® Ultra Grey® RTV Silicone Gasket Maker 599BR

This instruction set provides a basic task list, though presumes mechanical familiarity and confidence in disassembly and reassembly of the bike. The BMW service manual may provide more detailed instruction on fairing removal and bike repair. Installing technician should have a working knowledge of camshaft replacement procedures. *Valve clearance check and adjustment is recommended after sprockets installed.*

K1200RS 01 51 9 799 595

1. Remove black plastic sparkplug cover plate.
2. Remove 11x, T-40 Torx valvecover retaining bolts.
3. Remove T-27 timing chain tensioner access port screw from front timing cover as shown.



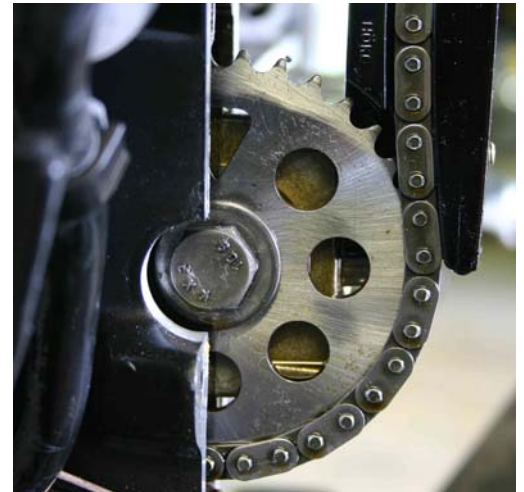
4. Insert locking pin in timing chain tensioner access port.



5. Rotate motor upwards, when standing on left hand side of bike (counter-clock-wise when facing front cover of engine). This maintains proper timing chain tension and compresses tensioner. Use both open ended wrenches on cams as shown and rotate simultaneously.



Rotate cams to TDC (top dead center) position as shown. Both triangles in cam sprockets should be aligned with each other in this position.

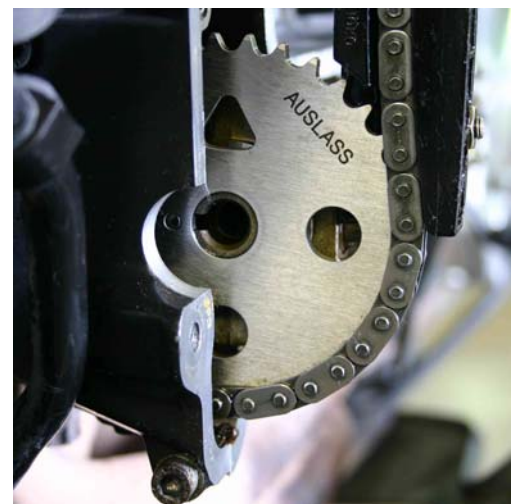


6. Starting with exhaust cam, remove exhaust cam sprocket using 17mm socket & an open ended wrench on the camshaft. Install performance sprocket with Auslass (exhaust) etching facing front of engine. The point of the triangle indicates TDC position.

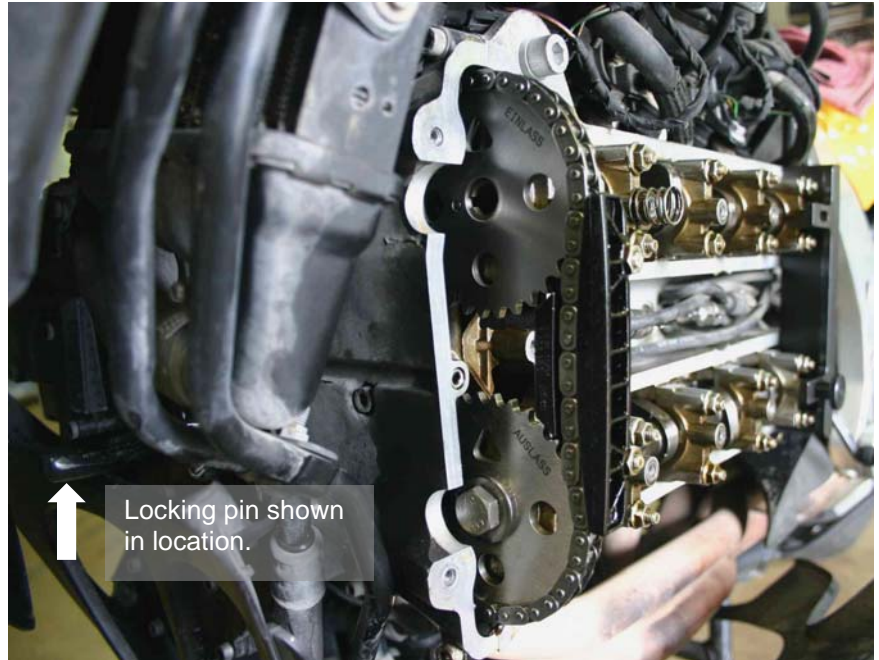
Ensure dowel pin is seated properly, in locating guide on cam flange. Failure to do so may result in damage to camshaft or improper camshaft timing, or worse.

Torque cam sprocket retaining bolt to 56Nm (41.3lb-ft).

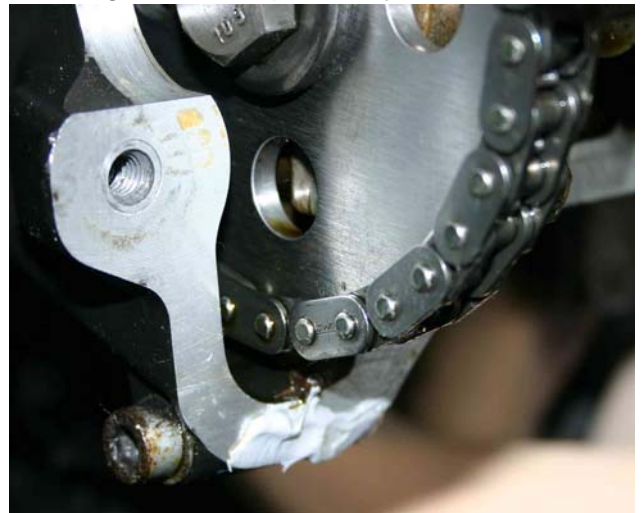
Confirm both cams are still aligned and set at TDC.



7. Repeat procedure #7 for intake cam sprocket replacement. This time Einlass (intake) faces front of engine. Again, confirm both sprockets are still aligned and at TDC.



8. Pull locking pin from timing chain tensioner, and reinstall T-27 retaining screw.
9. Apply Permatex® Ultra Grey® RTV to cylinder head side of sealing surfaces, specifically at lower corner of gasket, and around half-moon profiles. Also apply as shown to lower junction of upper timing cover & cylinder head. Reinstall valve cover and torque T-40 Torx bolts evenly to 10Nm (7.3lb-ft). Reinstall spark plug cover panel.



10. If special software is required when using the performance sprockets with your bike, install it now. If software is not required, reinstall body panels.

© All images copyright Rhine West Performance, Inc. 2005